

## Master of Science Degree in Psychology

The Department of Psychology offers a Masters of Science degree, whose program of study has developed a national reputation for producing graduates with strong quantitative skills and exceptional methodological capabilities. Approximately 40 students are enrolled each academic year and almost half come to the program from out of state undergraduate programs.

This graduate degree is designed to specifically address the needs of two groups:

- Students who need additional coursework & research experience to be competitive for admission into doctoral studies programs;

Or

- Students who need graduate-level coursework & training to be competitive for jobs in behavioral science laboratories or industrial/organizational settings.

The graduate program provides extensive research experience and coursework in experimental methodology, statistics, and content areas of experimental psychology (e.g., social, personality, cognitive, developmental and clinical).

We welcome qualified applicants to visit the Graduate School web site at [graduateschool.utsa.edu](http://graduateschool.utsa.edu) for further information.

### PSYCHOLOGY FACULTY

**James H. Bray, Ph.D. (Chair)**  
Clinical Psychology, Univ. of Houston

**Eileen Achorn, Ph.D.**  
Quantitative Psychology, Univ. of Texas At Austin

**Michael Baumann, Ph.D.**  
Social/Org. Psychology, Univ. of Illinois At Urbana-Champaign

**Thomas Coyle, Ph.D.**  
Developmental Psychology, Univ. of Florida

**Ann Eisenberg, Ph.D.**  
Developmental Psychology, Univ. of California Berkeley

**Ephrem Fernandez, Ph.D.**  
Clinical Psychology, Ohio State Univ.

**Robert Fuhrman, Ph.D.**  
Social Psychology, Univ. of Illinois at Urbana-Champaign

**Edward Golob, Ph.D.**  
Experimental Psychology, Dartmouth College

**Willie Hale, Ph.D.**  
Social/Quantitative Psychology, Univ. of Texas at San Antonio

**Stella Lopez Ph.D.**  
Social Psychology, Univ. of Texas At Arlington

**Deborah Mangold Ph.D.**  
Biopsychology, Howard Univ.

**Mary McNaughton-Cassill Ph.D.**  
Clinical Psychology, Univ. of California, San Diego  
State Univ. Joint Doctoral Program

**Sandra Morissette Ph.D.**  
Clinical Psychology, Boston University

**Augustine Osman Ph.D.**  
Clinical Psychology, West Virginia Univ.

**David Pillow Ph.D.**  
Social Psychology, Arizona State Univ.

**Paul Romanowich, Ph.D.**  
Experimental Psychology, Univ. of California at San Diego

**Michael Ryan Ph.D.**  
Cognitive Psychology, Stanford Univ.

**Alicia A. Swan, Ph.D.**  
Cognitive Psychology, Southern Illinois Univ. Carbondale

**Rebecca Weston Ph.D.**  
Experimental Psychology, Univ. of North Texas

**Tina Zawacki Ph.D.**  
Social Psychology, Wayne State University

### PSYCHOLOGY EMERITUS FACULTY

**Raymond Baird, Ph.D.**  
**James Dykes, Ph.D.**  
**Dorothy Flannagan, Ph.D.**  
**Raymond Garza, Ph.D.**



The University of Texas at San Antonio

### **Department of Psychology**



*The Department of Psychology* engages students through the learning and development of theory and methodology to advance the science of Psychology. The department's mission is to acquire and maintain an international reputation for outstanding research and practice providing undergraduates and graduates the knowledge and skill necessary to apply the concepts of psychology to their next level of education or professional career.

The department offers the following degrees of fields of study:

- Bachelor of Arts in Psychology
- Undergraduate minor in Psychology
- Masters of Science in Psychology
- Doctor of Philosophy (Ph.D.) in Psychology

*The BA in Psychology* emphasizes the empirical study of human behavior structured around a core body of knowledge in psychology which may lead to additional training in the following areas of psychology:

- biological
- clinical
- cognitive
- cross-cultural
- developmental
- health
- industrial-organizational
- social

#### **CONTACT INFORMATION**

**Department of Psychology**  
**University of Texas at San Antonio**  
**One UTSA Circle**  
**San Antonio, Texas 78249**  
**P: 210 458 4372**  
**F: 210 458 5728**

**WEBSITE** <http://colfa.utsa.edu/psychology/>

### **QUICK AND EASY GUIDELINES FOR STUDENT SUCCESS**

- Learn the policies and procedures relevant to your degree program by reading the UTSA Undergraduate/Graduate Catalog and the Information Bulletin;
- Schedule your advising appointments early each semester to ensure you are on track with your degree requirements, registration, and/or graduation;
- Using your advising tools, create your schedule, register for classes & buy your books early;
- Be familiar with all important dates & deadlines on the academic calendar each semester;
- Apply early for financial aid every academic year by March 1 every spring for the following academic year;
- Apply awarded financial aid and/or pay your tuition and fees on time, to avoid being dropped from your classes.

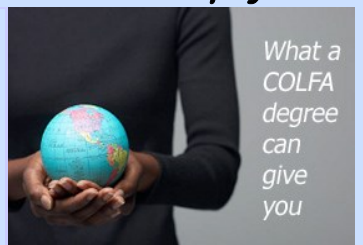
### **CLASS ATTENDANCE**

- Read all syllabi **CAREFULLY** and note important deadlines in your academic planner;
- At minimum, study two (2) hours for each hour you are in class each week - 12 hours of coursework = 24 hours of study each week;
- Read your myUTSA email every day!

**Mission**

The College of Liberal and Fine Arts Advising Center engages students to create a path for their academic growth and professional success.

**Philosophy**



Our advisors facilitate active and collaborative relationships with our students to empower them in realizing their potential. As a partner in their educational experience, we prepare them to be engaged in independent thought, diverse experiences, and dynamic leadership within a global society.

**Advising Model of Delivery**

The Social Sciences Advising Center has a service delivery model comprised of the following:

- Appointments (30 minutes—1 hour);
- Express Advising (5-10 minutes for true “quick questions”);
- Email contact (not to be substituted for an appointment);
- Phone contact (not to be substituted for an appointment).

Our primary mode of relationship-building is through the advising appointment. The appointment provides the student our undivided attention and a better opportunity for building our partnership. We use an advising syllabus to guide you through your upperclassmen advising experience and expect each of our students to maintain an advising portfolio which contains all pertinent degree information. Students are required to bring their portfolio to each advising appointment and express advising.

**Peak Periods of Advising**

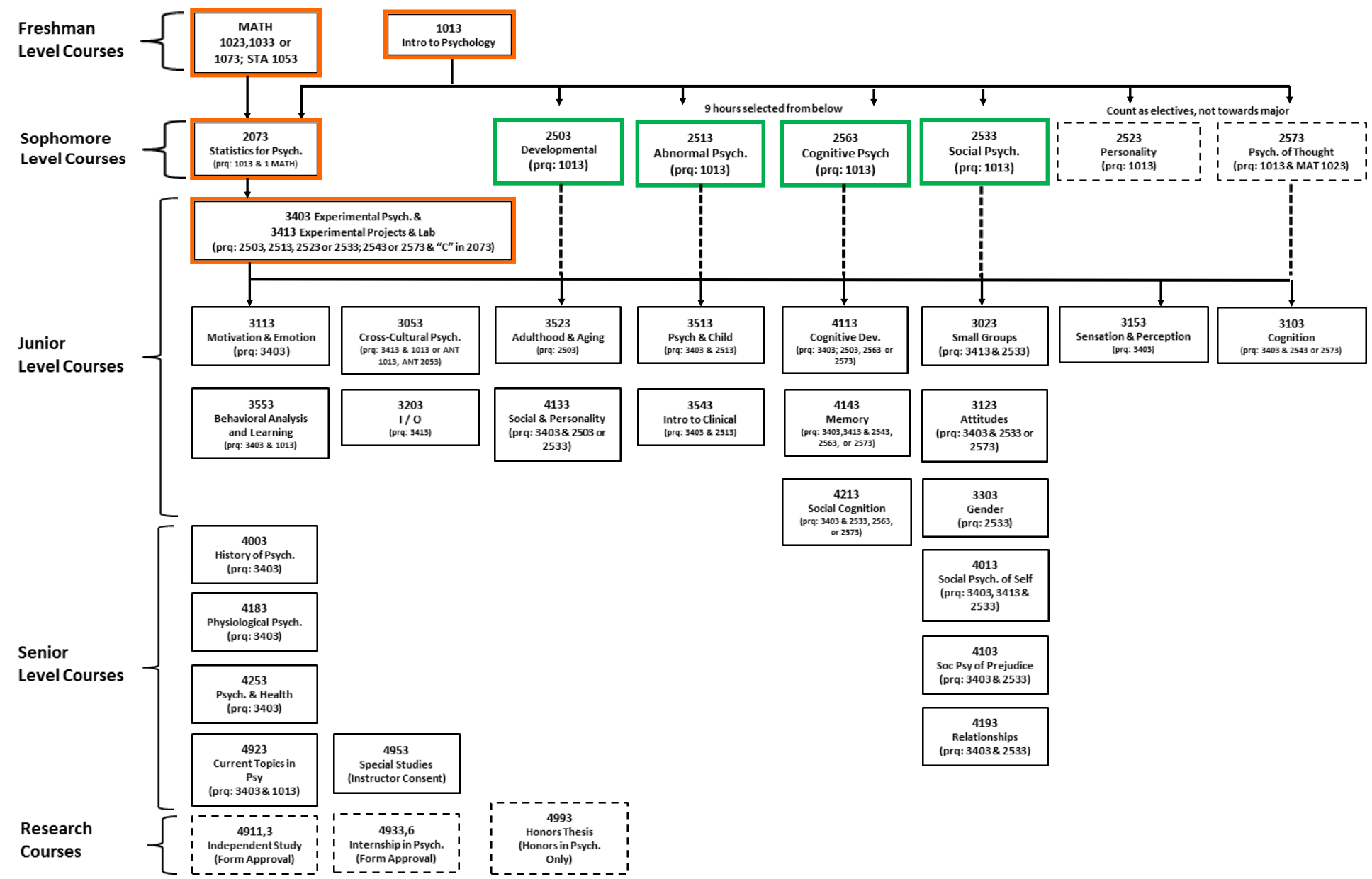
During Peak Registration Periods (August, November, January & April), we have more than one Express Advisor available and there is also limited availability for extended Express Advising to help new transfers; late readmissions/reinstatements; probation; or students with 45/90 holds, etc. We encourage students to schedule appointments prior to these peak periods.

**Contact Information**

**Social Sciences Advising Center - 1604**  
 MS 4.01.50  
 P: (210) 458-4900  
 F: (210) 458-4901  
 E-SOSCAadvising@utsa.edu

**Downtown Advising Center - DT**  
 BV 1.304  
 P- (210) 458-2550  
 E-dtadvising@utsa.edu

**PSYCHOLOGY COURSES FOR BACHELOR OF ARTS**



  Required Courses    
   9 hours from this group.    
   Count as electives, not towards major    
   12 hours upper-division from this group.    
 33 hours of electives required  
 12 hours of support work outside Psychology recommended  
 Prq – Prerequisite

PLEASE NOTE: It is the student's responsibility to read the catalog to confirm the accuracy of the above information. In case of discrepancy, the regular curriculum specified in the UTSA Undergraduate Catalog supersedes the above information.